

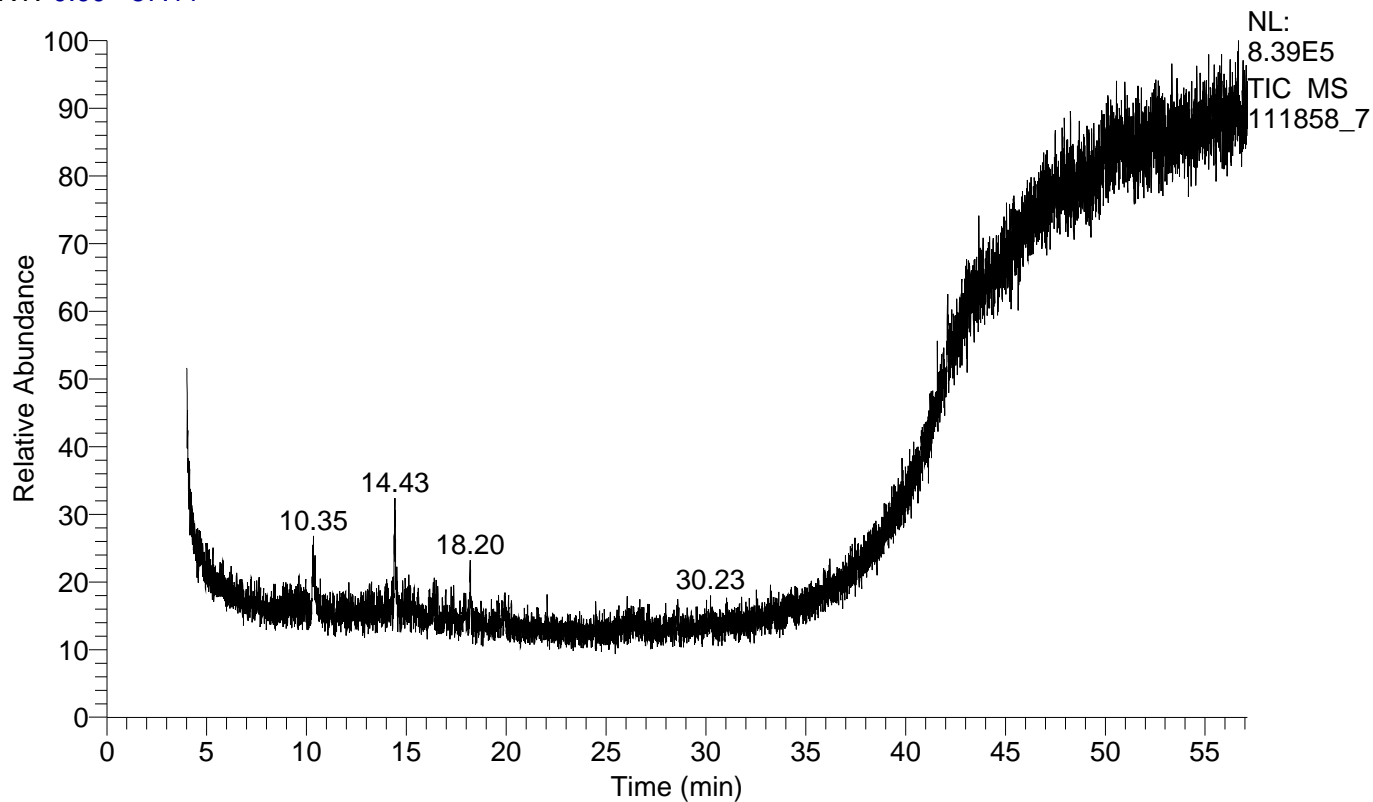
# ESOGU-ARUM

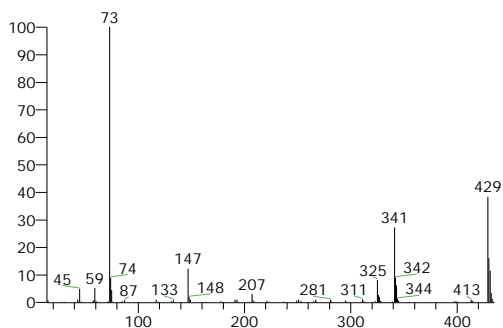
Data File: 111858\_7  
Current Data Path: C:\Xcalibur\data\OKN  
Sample ID: 1  
Run Time(min): 57.02

Original Data Path: C:\Xcalibur\data\OKN  
Sample Type: Unknown  
Acquisition Date: 04/11/23 08:12:02 AM  
Vial: 18

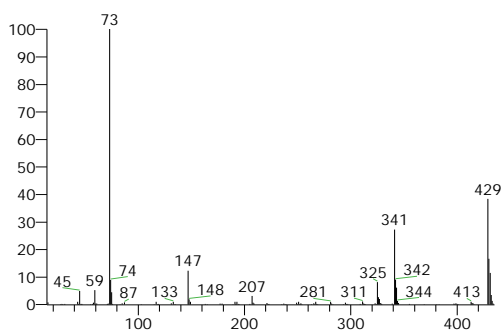
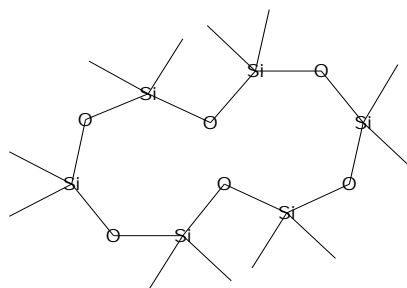
Instrument Method: C:\Xcalibur\methods\xMED.meth  
Original Processing Method: C:\Xcalibur\methods\arum\_xx\_qual  
Current Processing Method: N/A

RT: 0.00 - 57.11

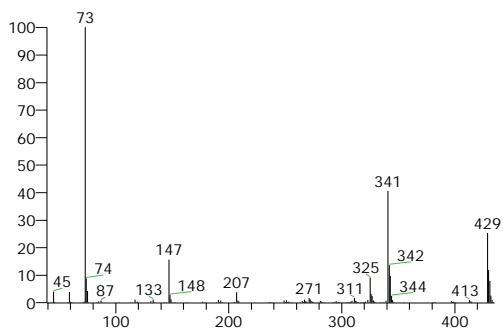
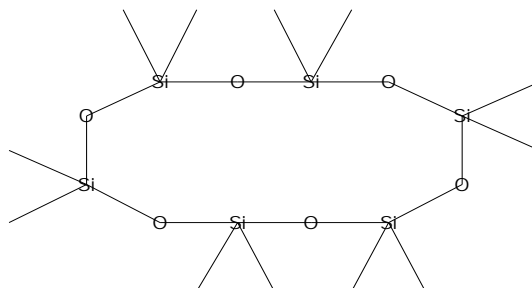




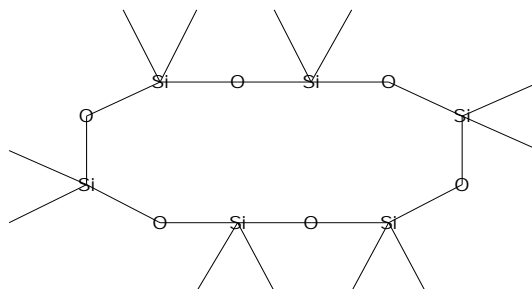
Cyclohexasiloxane, dodecamethyl-  
Formula C<sub>12</sub>H<sub>36</sub>O<sub>6</sub>Si<sub>6</sub>, MW 444, CAS# 540-97-6, Entry# 37894  
Dodecamethylcyclohexasiloxane



Cyclohexasiloxane, dodecamethyl- (CAS)  
Formula C<sub>12</sub>H<sub>36</sub>O<sub>6</sub>Si<sub>6</sub>, MW 444, CAS# 540-97-6, Entry# 584464  
Dodecamethylcyclohexasiloxane



CYCLOHEXASILOXANE, DODECAMETHYL-  
Formula C<sub>12</sub>H<sub>36</sub>O<sub>6</sub>Si<sub>6</sub>, MW 444, CAS# 540-97-6, Entry# 584463  
2,2,4,4,6,6,8,8,10,10,12,12-DODECAMETHYLCYCLOHEXASILOXANE #

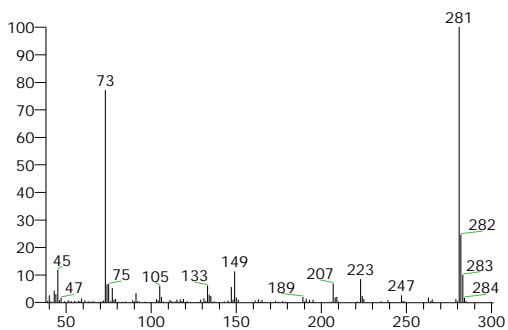


RT	Probability	Compound Name	SI	RSI	Cas #	Area %	Area
10.35	19.54	Cyclohexasiloxane, dodecamethyl-	446	675	540-97-6	9.80	367019.64
10.35	19.54	Cyclohexasiloxane, dodecamethyl- (CAS)	446	673	540-97-6	9.80	367019.64
10.35	19.54	CYCLOHEXASILOXANE, DODECAMETHYL-	443	683	540-97-6	9.80	367019.64

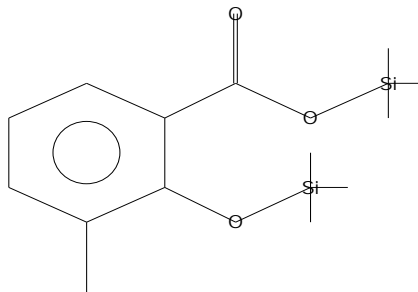
# ESOGU-ARUM

## Hit Spectrum

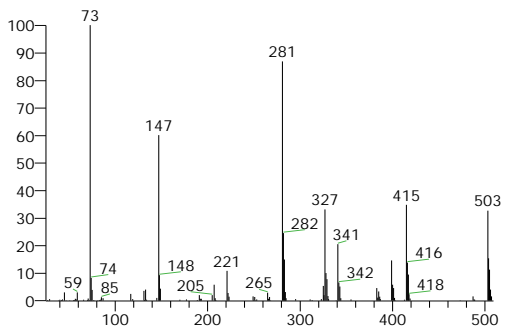
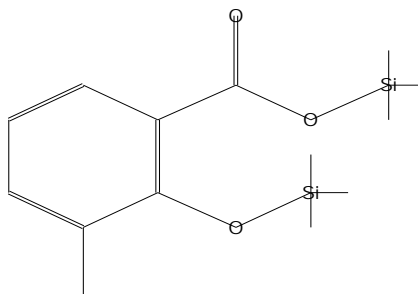
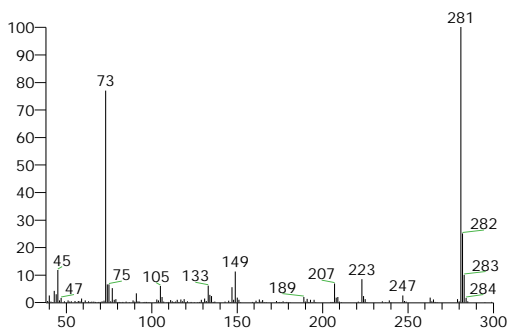
## Compound Structure



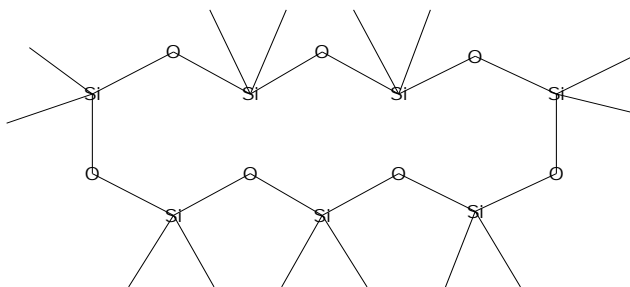
Benzoic acid, 3-methyl-2-trimethylsilyloxy-, trimethylsilyl ester  
Formula C<sub>14</sub>H<sub>24</sub>O<sub>3</sub>Si<sub>2</sub>, MW 296, CAS# NA, Entry# 173822



TRIMETHYLSILYL ESTER OF 3-METHYL-2-TRIMETHYLSILYLOXY-BENZOIC ACID  
Formula C<sub>14</sub>H<sub>24</sub>O<sub>3</sub>Si<sub>2</sub>, MW 296, CAS# NA, Entry# 364618



Cycloheptasiloxane, tetradecamethyl-  
Formula C<sub>14</sub>H<sub>42</sub>O<sub>7</sub>Si<sub>7</sub>, MW 518, CAS# 107-50-6, Entry# 37487  
2,2,4,4,6,6,8,8,10,10,12,12,14,14-Tetradecamethylcycloheptasiloxane #

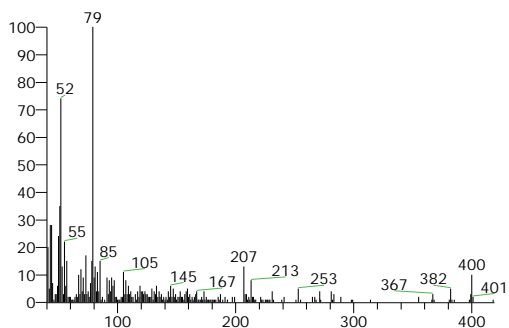


RT	Probability	Compound Name	SI	RSI	Cas #	Area %	Area
14.43	6.91	Benzoic acid, 3-methyl-2-trimethylsilyloxy-, trimethylsilyl ester	451	577	NA	18.14	679416.89
14.43	6.91	TRIMETHYLSILYL ESTER OF 3-METHYL-2-TRIMETHYLSILOX Y-BENZOIC ACID	451	576	NA	18.14	679416.89
14.43	5.15	Cycloheptasiloxane, tetradecamethyl-	443	596	107-50-6	18.14	679416.89

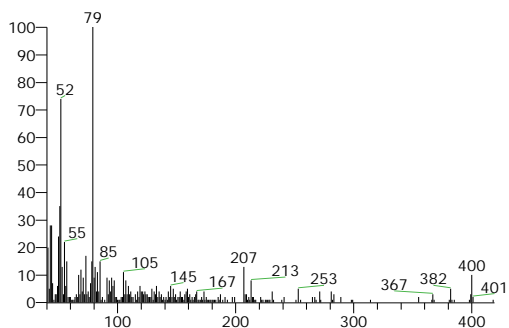
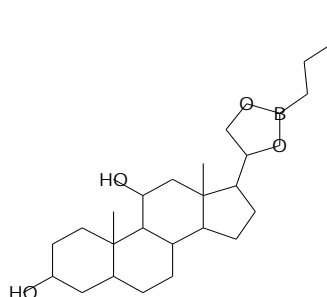
# ESOGU-ARUM

Hit Spectrum

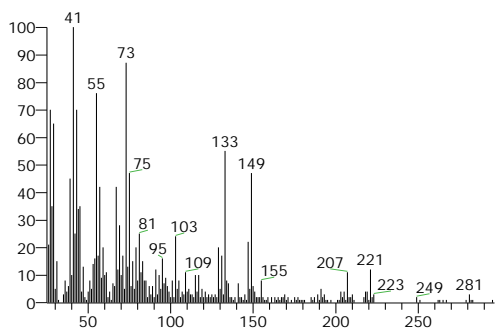
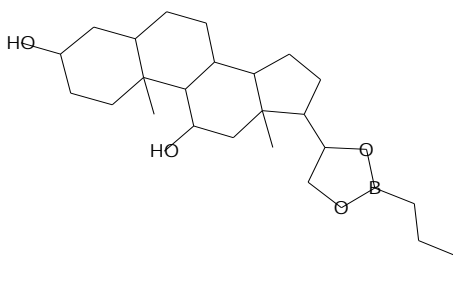
Compound Structure



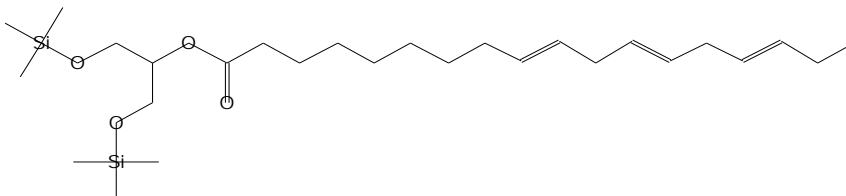
Pregnan-3,11,20,21-tetrol, cyclic 20,21-(butyl boronate), (3a,5a,11a,20R)-  
Formula C<sub>25</sub>H<sub>43</sub>BO<sub>4</sub>, MW 418, CAS# 55556-74-6, Entry# 41592  
17-(2-Butyl-1,3,2-dioxaborolan-4-yl)androstane-3,11-diol #



Pregnan-3,11,20,21-tetrol, cyclic 20,21-(butyl boronate), (3a,5a,11a,20R)- (CAS)  
Formula C<sub>25</sub>H<sub>43</sub>BO<sub>4</sub>, MW 418, CAS# 55556-74-6, Entry# 562492  
5a-PREGNAN-3a,11a,20a,21-TETROL BUTYL BORONATE



9,12,15-Octadecatrienoic acid, 2-[(trimethylsilyl)oxy]-1-[[[(trimethylsilyl)oxy]methyl]ethyl ester], (Z,Z,Z)-  
Formula C<sub>27</sub>H<sub>52</sub>O<sub>4</sub>Si<sub>2</sub>, MW 496, CAS# 55521-23-8, Entry# 3312  
2-[(Trimethylsilyl)oxy]-1-[[[(trimethylsilyl)oxy]methyl]ethyl (9E,12E,15E)-9,12,15-octadecatrienoate #

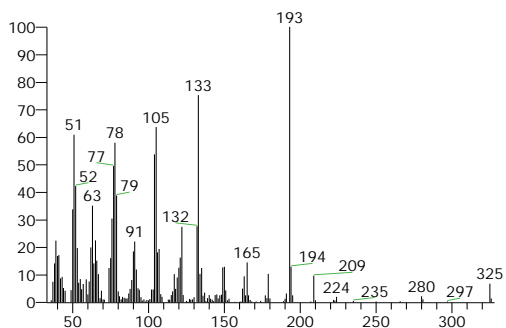


RT	Probability	Compound Name	SI	RSI	Cas #	Area %	Area
18.20	9.02	Pregnan-3,11,20,21-tetrol, cyclic 20,21-(butyl boronate), (3a,5a,11a,20R)-	435	497	55556-74-6	6.60	247113.44
18.20	9.02	Pregnan-3,11,20,21-tetrol, cyclic 20,21-(butyl boronate), (3a,5a,11a,20R)- (CAS)	435	497	55556-74-6	6.60	247113.44
18.20	7.09	9,12,15-Octadecatrienoic acid, 2-[(trimethylsilyl)oxy]-1-[[[(trimethylsilyl)oxy]methyl]ethyl ester], (Z,Z,Z)-	429	532	55521-23-8	6.60	247113.44

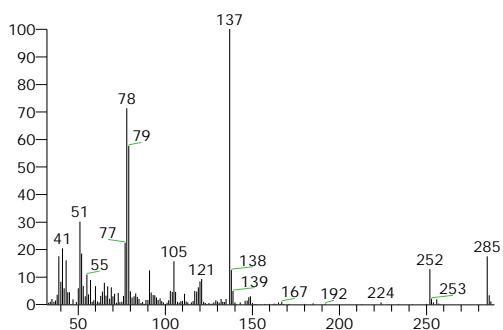
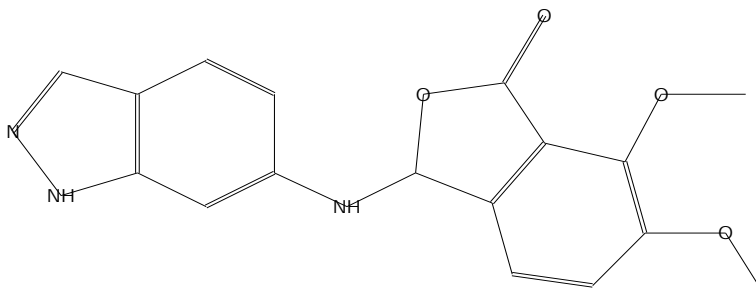
# ESOGU-ARUM

Hit Spectrum

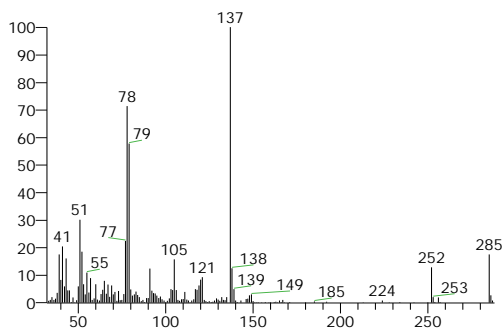
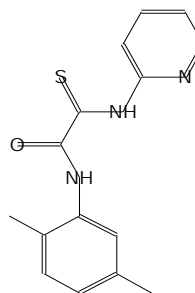
Compound Structure



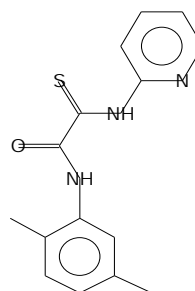
3-(1H-INDAZOL-6-YLAMINO)-6,7-DIMETHOXY-3H-ISOBENZOFURAN-1-ONE  
Formula C<sub>17</sub>H<sub>15</sub>N<sub>3</sub>O<sub>4</sub>, MW 325, CAS# NA, Entry# 426046  
3-(1H-INDAZOL-6-YLAMINO)-6,7-DIMETHOXY-2-BENZOFURAN-1(3H)-ONE



N-(2,5-Dimethyl-phenyl)-2-(pyridin-2-ylamino)-2-thioxo-acetamide  
Formula C<sub>15</sub>H<sub>15</sub>N<sub>3</sub>O<sub>2</sub>S, MW 285, CAS# NA, Entry# 340953  
N-(2,5-Dimethylphenyl)-2-(2-pyridinylamino)-2-thioxoacetamide



N-(2,5-Dimethyl-phenyl)-2-(pyridin-2-ylamino)-2-thioxo-acetamide  
Formula C<sub>15</sub>H<sub>15</sub>N<sub>3</sub>O<sub>2</sub>S, MW 285, CAS# NA, Entry# 99711

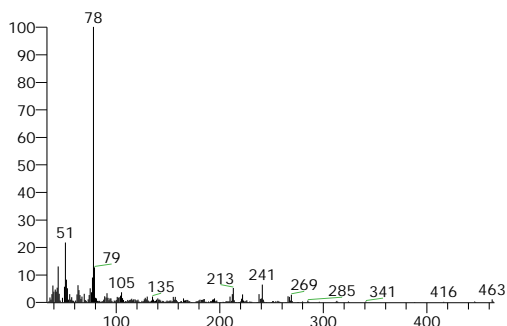


RT	Probability	Compound Name	SI	RSI	Cas #	Area %	Area
42.11	9.29	3-(1H-INDAZOL-6-YLAMINO)-6,7-DIMETHOXY-3H-ISOBENZOFURAN-1-ONE	503	596	NA	10.12	379308.16
42.11	7.85	N-(2,5-Dimethyl-phenyl)-2-(pyridin-2-yl amino)-2-thioxo-acetamide	499	612	NA	10.12	379308.16
42.11	6.93	N-(2,5-Dimethyl-phenyl)-2-(pyridin-2-yl amino)-2-thioxo-acetamide	496	609	NA	10.12	379308.16

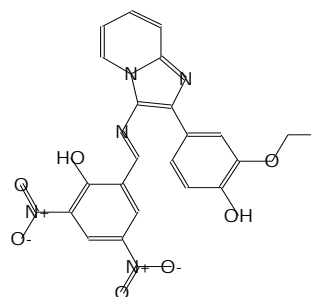
# ESOGU-ARUM

Hit Spectrum

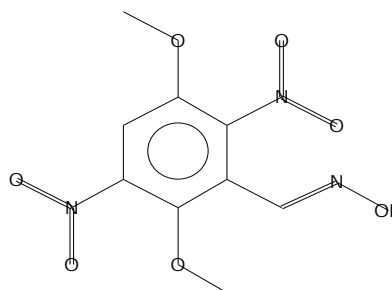
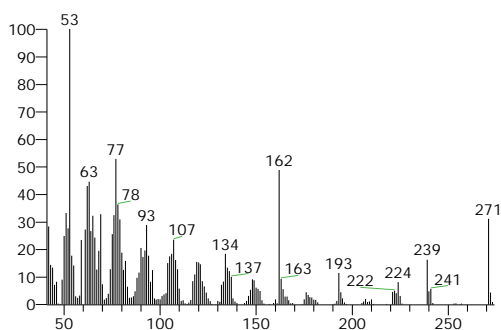
Compound Structure



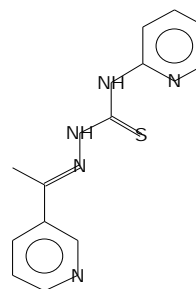
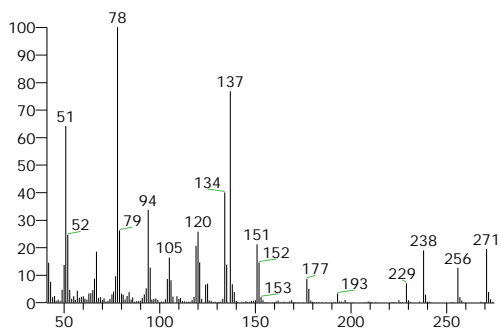
Formula C<sub>22</sub>H<sub>17</sub>N<sub>5</sub>O<sub>7</sub>, MW 463, CAS# NA, Entry# 597950



3,6-Dimethoxy-2,5-dinitrobenzaldehyde oxime  
Formula C<sub>9</sub>H<sub>9</sub>N<sub>3</sub>O<sub>7</sub>, MW 271, CAS# NA, Entry# 16748



methyl 2-pyridyl ketone 4-[2-pyridyl]-3-thiosemicarbazone  
Formula C<sub>13</sub>H<sub>13</sub>N<sub>5</sub>S, MW 271, CAS# 70619-05-5, Entry# 41366  
(1E)-1-(3-Pyridinyl)ethanone N-(2-pyridinyl)thiosemicarbazone #

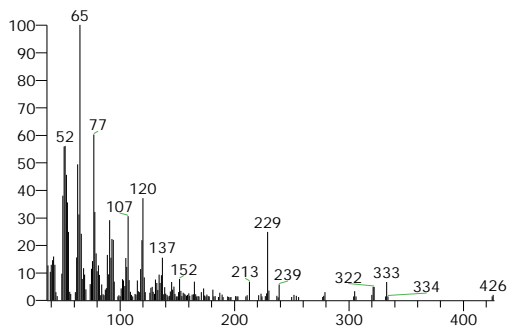


RT	Probability	Compound Name	SI	RSI	Cas #	Area %	Area
43.67	12.26	2-([2-(3-ETHOXY-4-HYDROXYPHENYL)IMIDAZO[1,2-A]PYRIDIN-3-YL]IMINO)METHYL)-4,6-DINITROPHENOL	505	604	NA	6.25	234141.06
43.67	8.65	3,6-Dimethoxy-2,5-dinitrobenzaldehyde oxime	495	624	NA	6.25	234141.06
43.67	7.31	methyl 2-pyridyl ketone 4-[2-pyridyl]-3-thiosemicarbazone	491	596	70619-05-5	6.25	234141.06

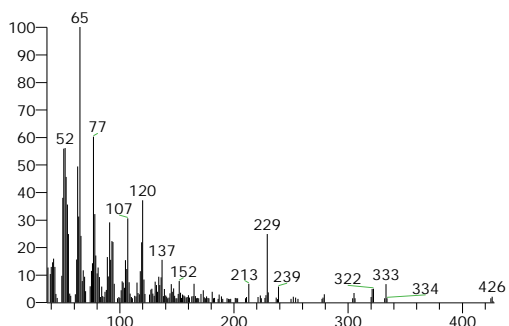
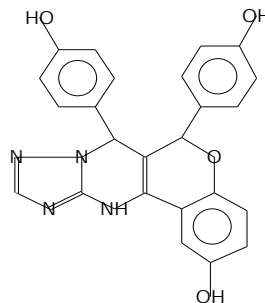
# ESOGU-ARUM

## Hit Spectrum

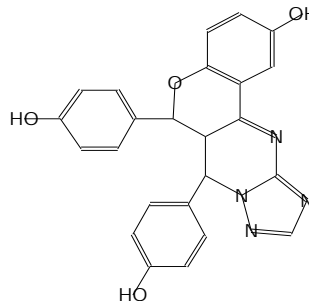
## Compound Structure



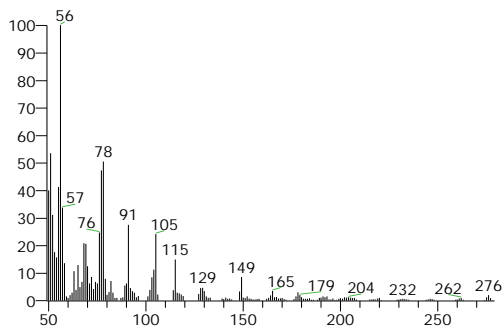
7,12-Dihydro-6,7-bis(4-hydroxyphenyl)-6H-[1,2,4]triazolo[1',5':1,2]pyrimido[5,4-c]chromen-2-ol  
Formula C<sub>24</sub>H<sub>18</sub>N<sub>4</sub>O<sub>4</sub>, MW 426, CAS# NA, Entry# 27977



7,12-Dihydro-6,7-bis(4-hydroxyphenyl)-6H-[1,2,4]triazolo[1',5':1,2]pyrimido[5,4-c]chromen-2-ol  
Formula C<sub>24</sub>H<sub>18</sub>N<sub>4</sub>O<sub>4</sub>, MW 426, CAS# NA, Entry# 569540  
7,12-DIHYDRO-6,7-BIS(4-HYDROXYPHENYL)-6H-[1,2,4]TRIAZOLO[1',5':1,



DIMETHYLDIPHENYLTETHYLIDYLPYRROLIDINE  
Formula C<sub>20</sub>H<sub>23</sub>N, MW 277, CAS# NA, Entry# 323094

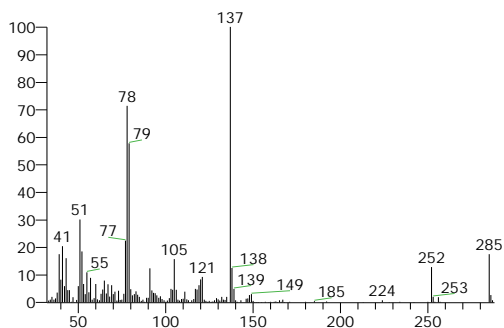


RT	Probability	Compound Name	SI	RSI	Cas #	Area %	Area
43.88	8.20	7,12-Dihydro-6,7-bis(4-hydroxyphenyl)-6H-[1,2,4]triazolo[1',5':1,2]pyrimido[5,4-c]chromen-2-ol	505	614	NA	4.39	164328.81
43.88	7.88	7,12-Dihydro-6,7-bis(4-hydroxyphenyl)-6H-[1,2,4]triazolo[1',5':1,2]pyrimido[5,4-c]chromen-2-ol	504	614	NA	4.39	164328.81
43.88	5.25	DIMETHYLDIPHENYLTETHYLIDYLPYRROLIDINE	492	642	NA	4.39	164328.81

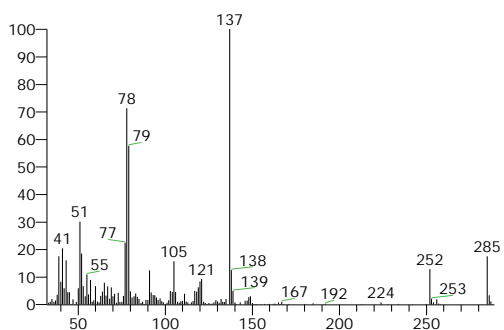
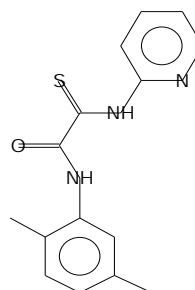
# ESOGU-ARUM

Hit Spectrum

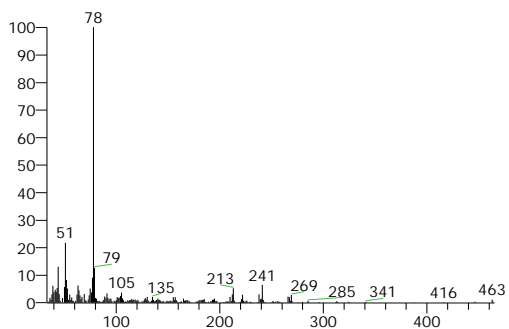
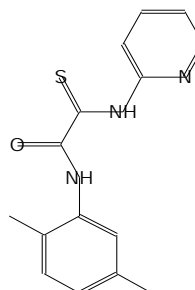
Compound Structure



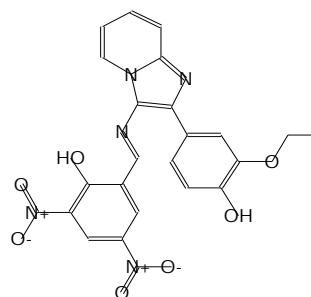
N-(2,5-Dimethyl-phenyl)-2-(pyridin-2-ylamino)-2-thioxo-acetamide  
Formula C<sub>15</sub>H<sub>15</sub>N<sub>3</sub>O<sub>2</sub>S, MW 285, CAS# NA, Entry# 99711



N-(2,5-Dimethyl-phenyl)-2-(pyridin-2-ylamino)-2-thioxo-acetamide  
Formula C<sub>15</sub>H<sub>15</sub>N<sub>3</sub>O<sub>2</sub>S, MW 285, CAS# NA, Entry# 340953  
N-(2,5-Dimethylphenyl)-2-(2-pyridinylamino)-2-thioxoacetamide



Formula C<sub>22</sub>H<sub>17</sub>N<sub>5</sub>O<sub>7</sub>, MW 463, CAS# NA, Entry# 597950



RT	Probability	Compound Name	SI	RSI	Cas #	Area %	Area
47.49	9.40	N-(2,5-Dimethyl-phenyl)-2-(pyridin-2-yl amino)-2-thioxo-acetamide	512	675	NA	4.26	159606.42
47.49	9.04	N-(2,5-Dimethyl-phenyl)-2-(pyridin-2-yl amino)-2-thioxo-acetamide	511	674	NA	4.26	159606.42
47.49	6.38	2-((2-(3-ETHOXY-4-HYDROXYPHE NYL)IMIDAZO[1,2-A]PYRIDIN-3-YL )IMINO} METHYL)-4,6-DINITROPHE NOL	501	595	NA	4.26	159606.42

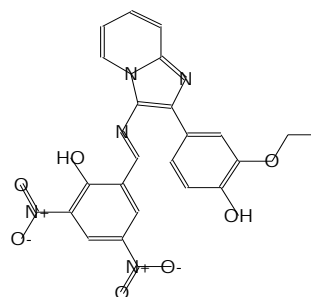
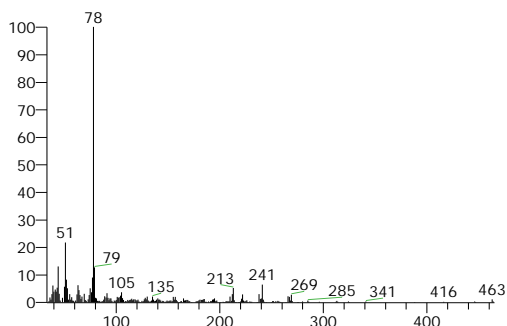


# ESOGU-ARUM

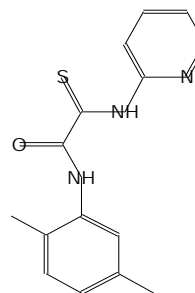
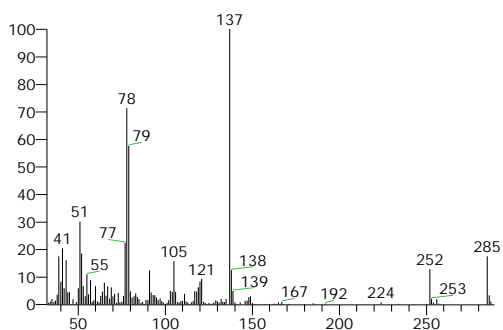
## Hit Spectrum

## Compound Structure

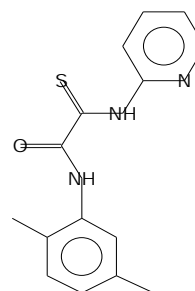
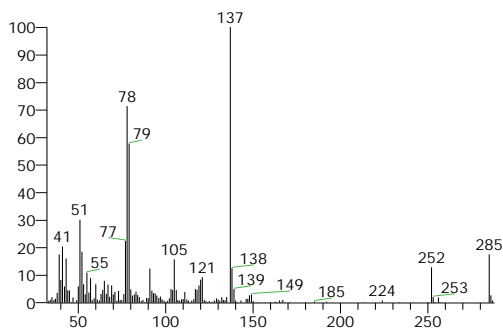
Formula C22H17N5O7, MW 463, CAS# NA, Entry# 597950



N-(2,5-Dimethyl-phenyl)-2-(pyridin-2-ylamino)-2-thioxo-acetamide  
Formula C15H15N3OS, MW 285, CAS# NA, Entry# 340953  
N-(2,5-Dimethylphenyl)-2-(2-pyridinylamino)-2-thioxoacetamide



N-(2,5-Dimethyl-phenyl)-2-(pyridin-2-ylamino)-2-thioxo-acetamide  
Formula C15H15N3OS, MW 285, CAS# NA, Entry# 99711

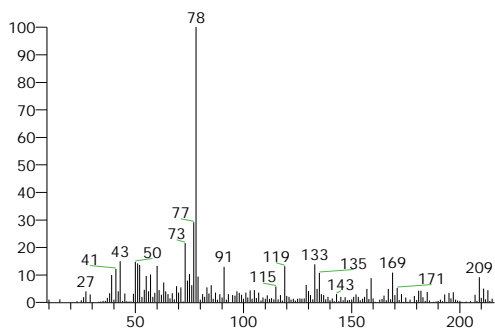


RT	Probability	Compound Name	SI	RSI	Cas #	Area %	Area
47.95	18.52	2-([2-(3-ETHOXY-4-HYDROXYPHENYL)IMIDAZO[1,2-A]PYRIDIN-3-YL]IMINO)METHYL)-4,6-DINITROPHENOL	511	613	NA	3.62	135532.80
47.95	11.22	N-(2,5-Dimethyl-phenyl)-2-(pyridin-2-ylamino)-2-thioxo-acetamide	496	675	NA	3.62	135532.80
47.95	10.35	N-(2,5-Dimethylphenyl)-2-(2-pyridinylamino)-2-thioxoacetamide	494	674	NA	3.62	135532.80

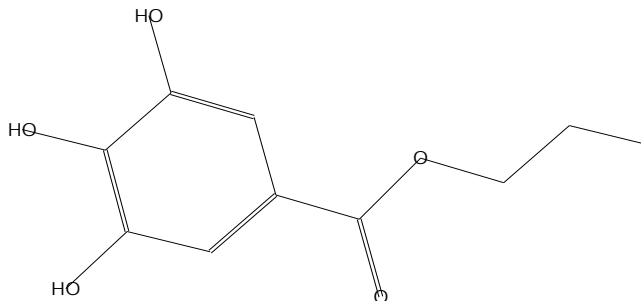
# ESOGU-ARUM

Hit Spectrum

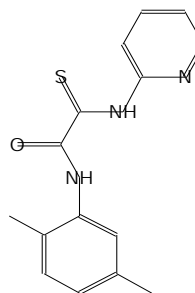
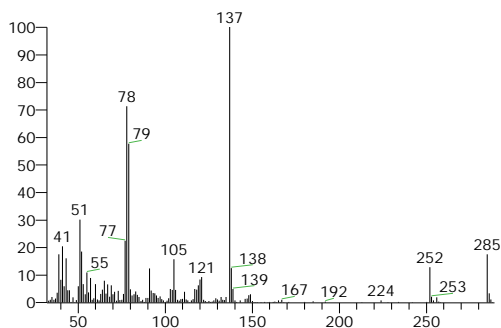
Compound Structure



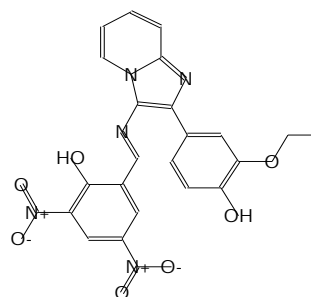
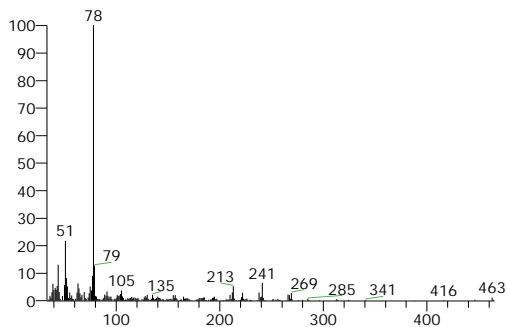
Benzoic acid, 3,4,5-trihydroxy-, propyl ester (CAS)  
Formula C<sub>10</sub>H<sub>12</sub>O<sub>5</sub>, MW 212, CAS# 121-79-9, Entry# 168871  
Nipa 49



N-(2,5-Dimethyl-phenyl)-2-(pyridin-2-ylamino)-2-thioxo-acetamide  
Formula C<sub>15</sub>H<sub>15</sub>N<sub>3</sub>O<sub>2</sub>S, MW 285, CAS# NA, Entry# 340953  
N-(2,5-Dimethylphenyl)-2-(2-pyridinylamino)-2-thioxoacetamide



Formula C<sub>22</sub>H<sub>17</sub>N<sub>5</sub>O<sub>7</sub>, MW 463, CAS# NA, Entry# 597950

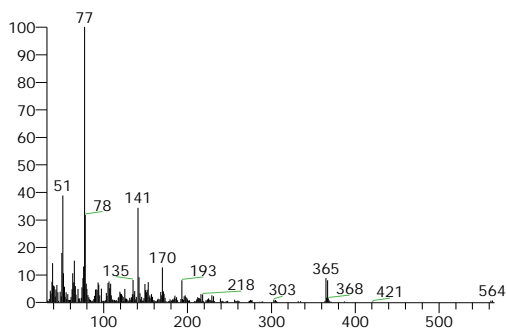


RT	Probability	Compound Name	SI	RSI	Cas #	Area %	Area
48.26	7.80	Benzoic acid, 3,4,5-trihydroxy-, propyl ester (CAS)	514	621	121-79-9	6.90	258352.68
48.26	5.50	N-(2,5-Dimethyl-phenyl)-2-(pyridin-2-yl amino)-2-thioxo-acetamide	504	651	NA	6.90	258352.68
48.26	5.08	2-({[2-(3-ETHOXY-4-HYDROXYPHENYL)IMIDAZO[1,2-A]PYRIDIN-3-YL]IMINO}METHYL)-4,6-DINITROPHENOL	502	581	NA	6.90	258352.68

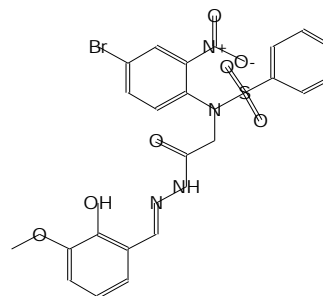
# ESOGU-ARUM

## Hit Spectrum

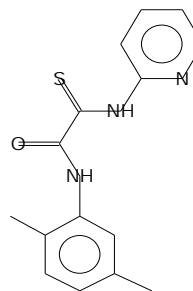
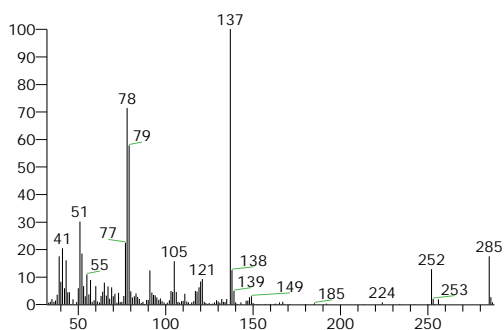
## Compound Structure



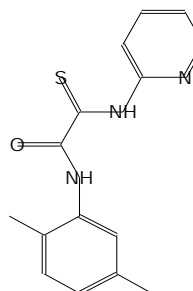
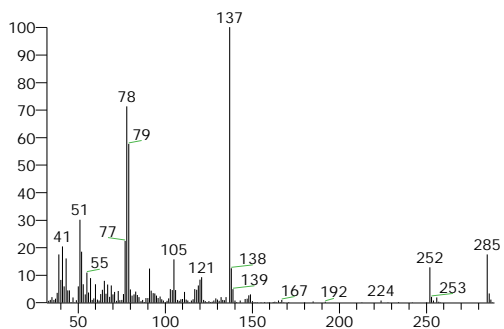
Formula C<sub>22</sub>H<sub>19</sub>BrN<sub>4</sub>O<sub>7</sub>S, MW 562, CAS# NA, Entry# 636813



N-(2,5-Dimethyl-phenyl)-2-(pyridin-2-ylamino)-2-thioxo-acetamide  
Formula C<sub>15</sub>H<sub>15</sub>N<sub>3</sub>O<sub>2</sub>S, MW 285, CAS# NA, Entry# 99711



N-(2,5-Dimethyl-phenyl)-2-(pyridin-2-ylamino)-2-thioxo-acetamide  
Formula C<sub>15</sub>H<sub>15</sub>N<sub>3</sub>O<sub>2</sub>S, MW 285, CAS# NA, Entry# 340953  
N-(2,5-Dimethylphenyl)-2-(2-pyridinylamino)-2-thioxoacetamide



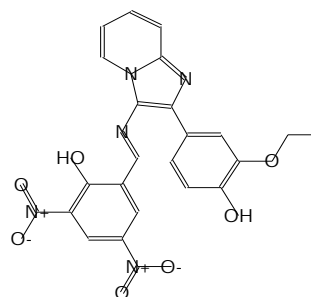
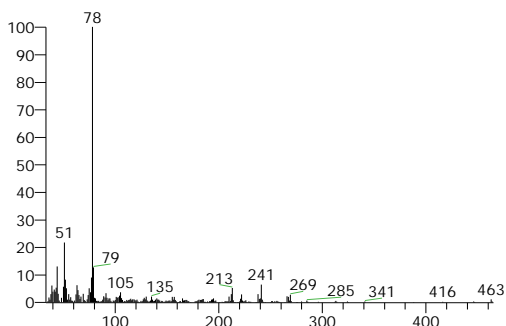
RT	Probability	Compound Name	SI	RSI	Cas #	Area %	Area
48.81	4.69	N-(4-BROMO-2-NITRO-PHENYL)-N-(2-HYDROXY-3-METHOXY-BENZYL IDENE-HYDRAZINOCARBONYLMETHYL)-BENZENESULFONAMIDE	460	567	NA	3.54	132514.84
48.81	3.96	N-(2,5-Dimethyl-phenyl)-2-(pyridin-2-yl amino)-2-thioxo-acetamide	456	630	NA	3.54	132514.84
48.81	3.96	N-(2,5-Dimethyl-phenyl)-2-(pyridin-2-yl amino)-2-thioxo-acetamide	456	628	NA	3.54	132514.84

# ESOGU-ARUM

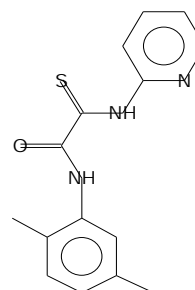
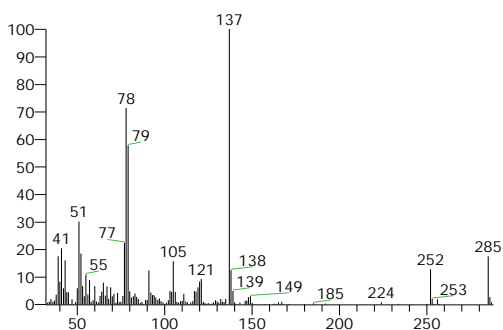
## Hit Spectrum

## Compound Structure

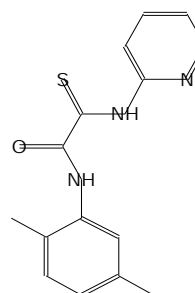
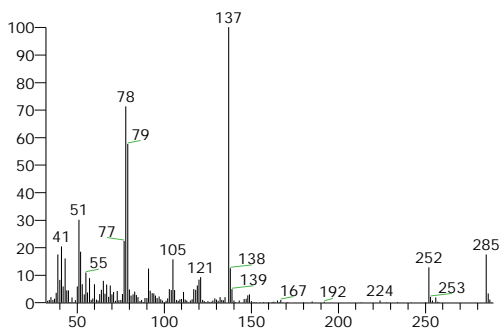
Formula C22H17N5O7, MW 463, CAS# NA, Entry# 597950



N-(2,5-Dimethyl-phenyl)-2-(pyridin-2-ylamino)-2-thioxo-acetamide  
Formula C15H15N3OS, MW 285, CAS# NA, Entry# 99711



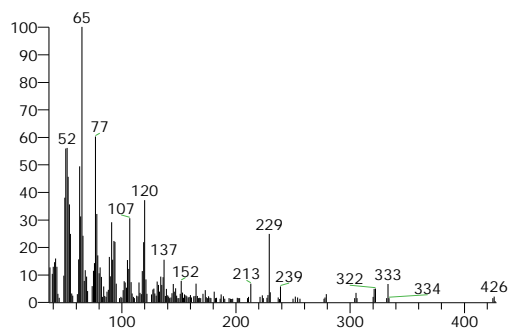
N-(2,5-Dimethyl-phenyl)-2-(pyridin-2-ylamino)-2-thioxo-acetamide  
Formula C15H15N3OS, MW 285, CAS# NA, Entry# 340953  
N-(2,5-Dimethylphenyl)-2-(2-pyridinylamino)-2-thioxoacetamide



RT	Probability	Compound Name	SI	RSI	Cas #	Area %	Area
49.83	7.97	2-([2-(3-ETHOXY-4-HYDROXYPHENYL)IMIDAZO[1,2-A]PYRIDIN-3-YL]IMINO)METHYL)-4,6-DINITROPHENOL	465	576	NA	6.47	242331.76
49.83	7.35	N-(2,5-Dimethyl-phenyl)-2-(pyridin-2-yl amino)-2-thioxo-acetamide	463	643	NA	6.47	242331.76
49.83	7.35	N-(2,5-Dimethyl-phenyl)-2-(pyridin-2-yl amino)-2-thioxo-acetamide	463	641	NA	6.47	242331.76

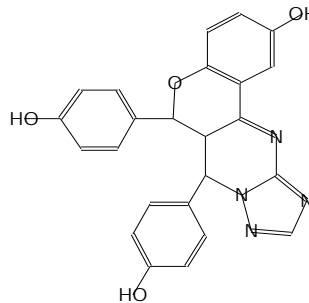
# ESOGU-ARUM

Hit Spectrum

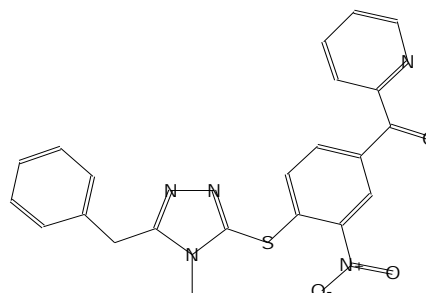
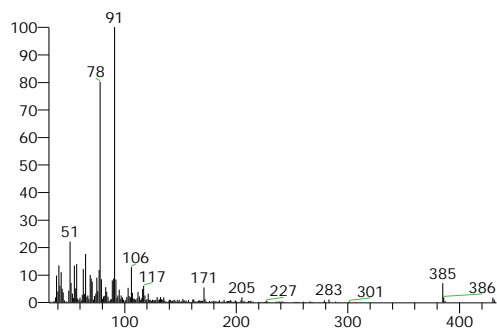


Compound Structure

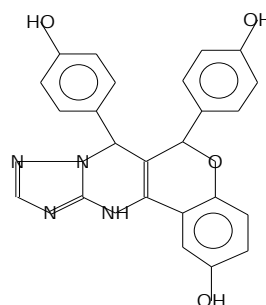
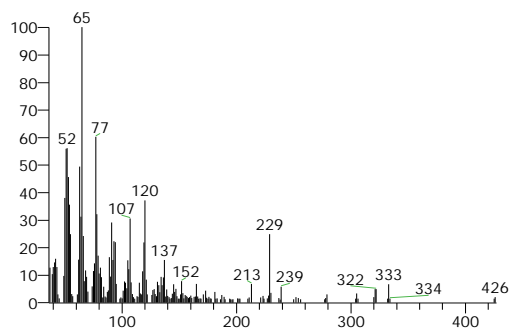
7,12-Dihydro-6,7-bis(4-hydroxyphenyl)-6H-[1,2,4]triazolo[1',5':1,2]pyrimido[5,4-c]chromen-2-ol  
Formula C<sub>24</sub>H<sub>18</sub>N<sub>4</sub>O<sub>4</sub>, MW 426, CAS# NA, Entry# 569540  
7,12-DIHYDRO-6,7-BIS(4-HYDROXYPHENYL)-6H-[1,2,4]TRIAZOLO[1',5':1,



Formula C<sub>22</sub>H<sub>17</sub>N<sub>5</sub>O<sub>3</sub>S, MW 431, CAS# NA, Entry# 574442



7,12-Dihydro-6,7-bis(4-hydroxyphenyl)-6H-[1,2,4]triazolo[1',5':1,2]pyrimido[5,4-c]chromen-2-ol  
Formula C<sub>24</sub>H<sub>18</sub>N<sub>4</sub>O<sub>4</sub>, MW 426, CAS# NA, Entry# 27977

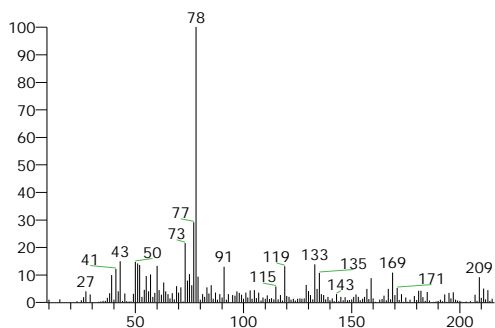


RT	Probability	Compound Name	SI	RSI	Cas #	Area %	Area
52.35	9.29	7,12-Dihydro-6,7-bis(4-hydroxyphenyl)-6H-[1,2,4]triazolo[1',5':1,2]pyrimido[5,4-c]chromen-2-ol	491	653	NA	4.47	167401.60
52.35	7.49	METHANONE, [4-[[4-METHYL-5-(PHENYLMETHYL)-4H-1,2,4-TRIAZOL-3-YL]THIO]-3-NITROPHENYL]2-PYRIDINYL	486	580	NA	4.47	167401.60
52.35	7.19	7,12-Dihydro-6,7-bis(4-hydroxyphenyl)-6H-[1,2,4]triazolo[1',5':1,2]pyrimido[5,4-c]chromen-2-ol	485	648	NA	4.47	167401.60

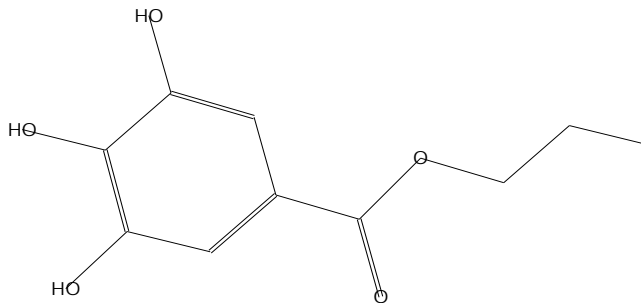
# ESOGU-ARUM

Hit Spectrum

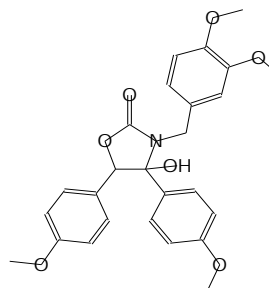
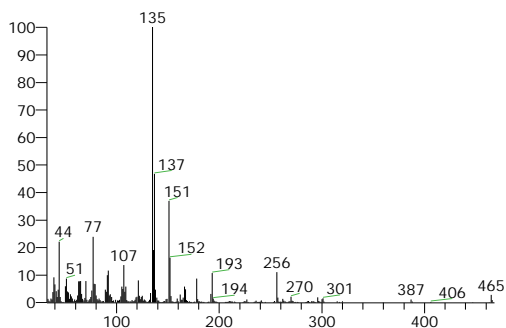
Compound Structure



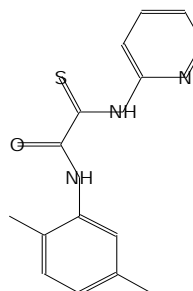
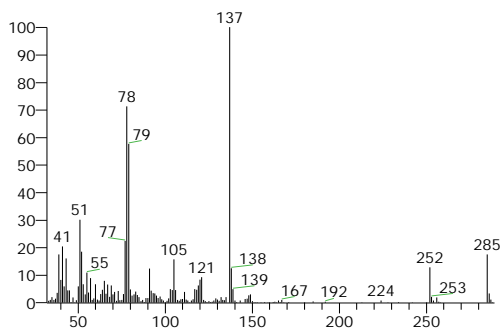
Benzoic acid, 3,4,5-trihydroxy-, propyl ester (CAS)  
Formula C<sub>10</sub>H<sub>12</sub>O<sub>5</sub>, MW 212, CAS# 121-79-9, Entry# 168871  
Nipa 49



Formula C<sub>26</sub>H<sub>27</sub>NO<sub>7</sub>, MW 465, CAS# NA, Entry# 599252



N-(2,5-Dimethylphenyl)-2-(pyridin-2-ylamino)-2-thioxoacetamide  
Formula C<sub>15</sub>H<sub>15</sub>N<sub>3</sub>O<sub>2</sub>S, MW 285, CAS# NA, Entry# 340953  
N-(2,5-Dimethylphenyl)-2-(2-pyridinylamino)-2-thioxoacetamide

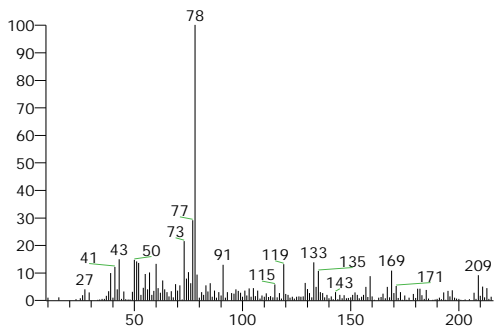


RT	Probability	Compound Name	SI	RSI	Cas #	Area %	Area
52.74	8.16	Benzoic acid, 3,4,5-trihydroxy-, propyl ester (CAS)	493	621	121-79-9	3.07	115071.08
52.74	6.42	2(3H)-OXAZOLONE, 3-[(3,4-DIMETHOXYPHENYL)METHYL]DIHYDRO-4-HYDROXY-4,5-BIS(4-METHOXYPHENYL)-	487	570	NA	3.07	115071.08
52.74	4.78	N-(2,5-Dimethylphenyl)-2-(pyridin-2-yl amino)-2-thioxoacetamide	479	638	NA	3.07	115071.08

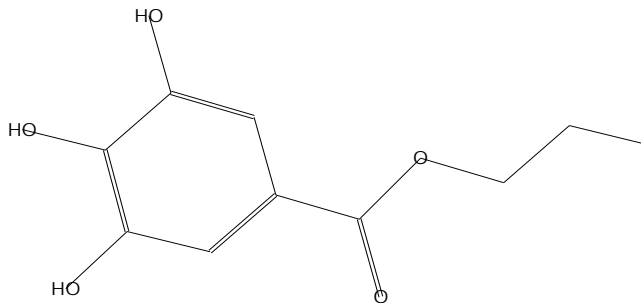
# ESOGU-ARUM

Hit Spectrum

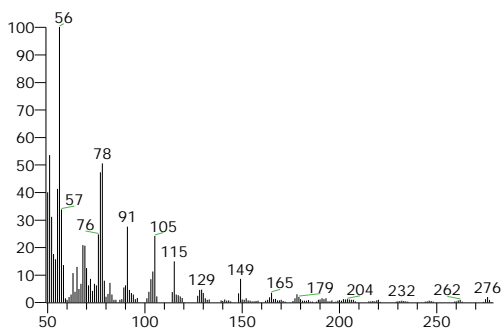
Compound Structure



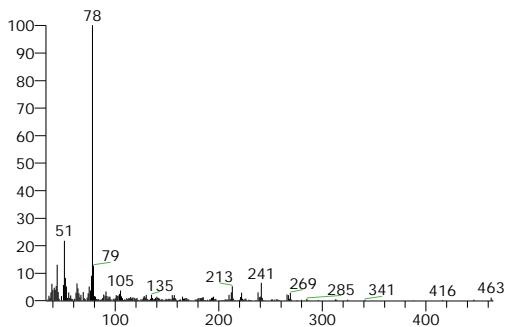
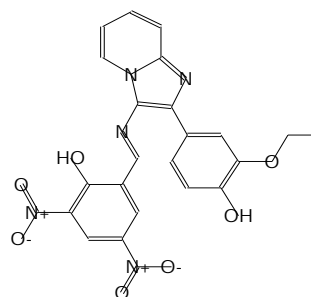
Benzoic acid, 3,4,5-trihydroxy-, propyl ester (CAS)  
Formula C10H12O5, MW 212, CAS# 121-79-9, Entry# 168871  
Nipa 49



DIMETHYLDIPHENYLTETHYLIDYLPYRROLIDINE  
Formula C20H23N, MW 277, CAS# NA, Entry# 323094



Formula C22H17N5O7, MW 463, CAS# NA, Entry# 597950

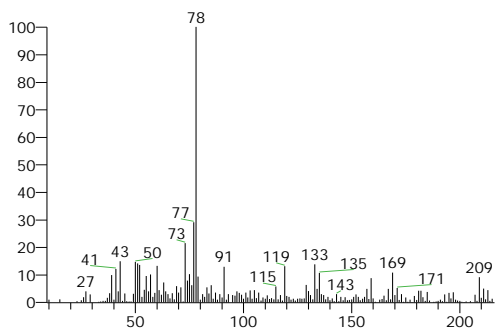


RT	Probability	Compound Name	SI	RSI	Cas #	Area %	Area
53.17	8.52	Benzoic acid, 3,4,5-trihydroxy-, propyl ester (CAS)	498	618	121-79-9	6.41	240147.20
53.17	5.84	DIMETHYLDIPHENYLTETHYLIDYLPYRROLIDINE	487	661	NA	6.41	240147.20
53.17	4.93	2-([2-(3-ETHOXY-4-HYDROXYPHENYL)IMIDAZO[1,2-A]PYRIDIN-3-YL]IMINO}METHYL)-4,6-DINITROPHENOL	483	568	NA	6.41	240147.20

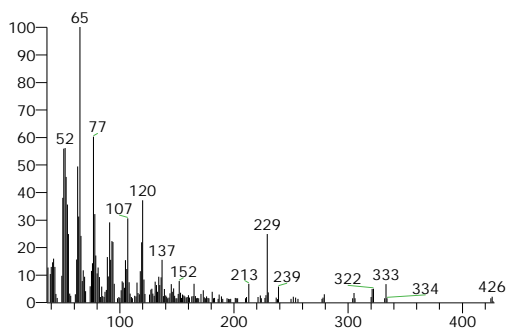
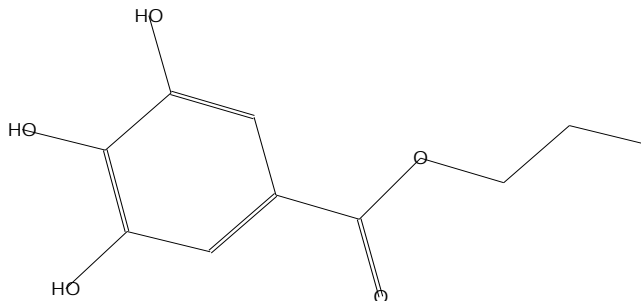
# ESOGU-ARUM

Hit Spectrum

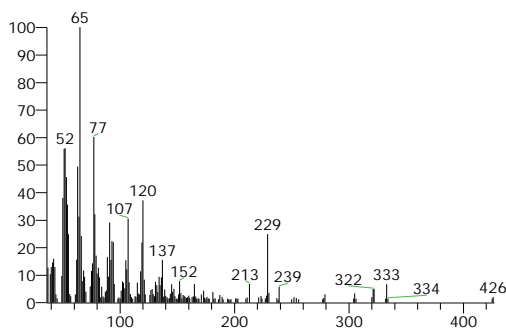
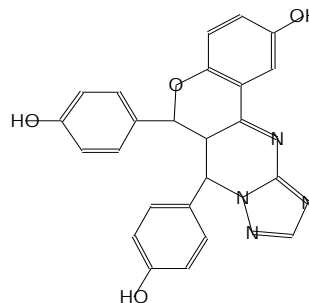
Compound Structure



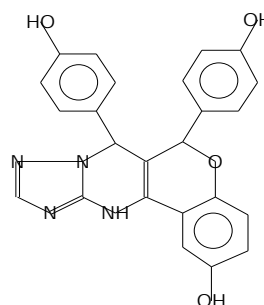
Benzoic acid, 3,4,5-trihydroxy-, propyl ester (CAS)  
Formula C10H12O5, MW 212, CAS# 121-79-9, Entry# 168871  
Nipa 49



7,12-Dihydro-6,7-bis(4-hydroxyphenyl)-6H-[1,2,4]triazolo[1',5':1,2]pyrimido[5,4-c]chromen-2-ol  
Formula C24H18N4O4, MW 426, CAS# NA, Entry# 569540  
7,12-DIHYDRO-6,7-BIS(4-HYDROXYPHENYL)-6H-[1,2,4]TRIAZOLO[1',5':1,



7,12-Dihydro-6,7-bis(4-hydroxyphenyl)-6H-[1,2,4]triazolo[1',5':1,2]pyrimido[5,4-c]chromen-2-ol  
Formula C24H18N4O4, MW 426, CAS# NA, Entry# 27977



RT	Probability	Compound Name	SI	RSI	Cas #	Area %	Area
53.94	18.51	Benzoic acid, 3,4,5-trihydroxy-, propyl ester (CAS)	517	661	121-79-9	5.98	224106.97
53.94	4.29	7,12-Dihydro-6,7-bis(4-hydroxyphenyl)-6H-[1,2,4]triazolo[1',5':1,2]pyrimido[5,4-c]chromen-2-ol	477	627	NA	5.98	224106.97
53.94	4.29	7,12-Dihydro-6,7-bis(4-hydroxyphenyl)-6H-[1,2,4]triazolo[1',5':1,2]pyrimido[5,4-c]chromen-2-ol	477	626	NA	5.98	224106.97